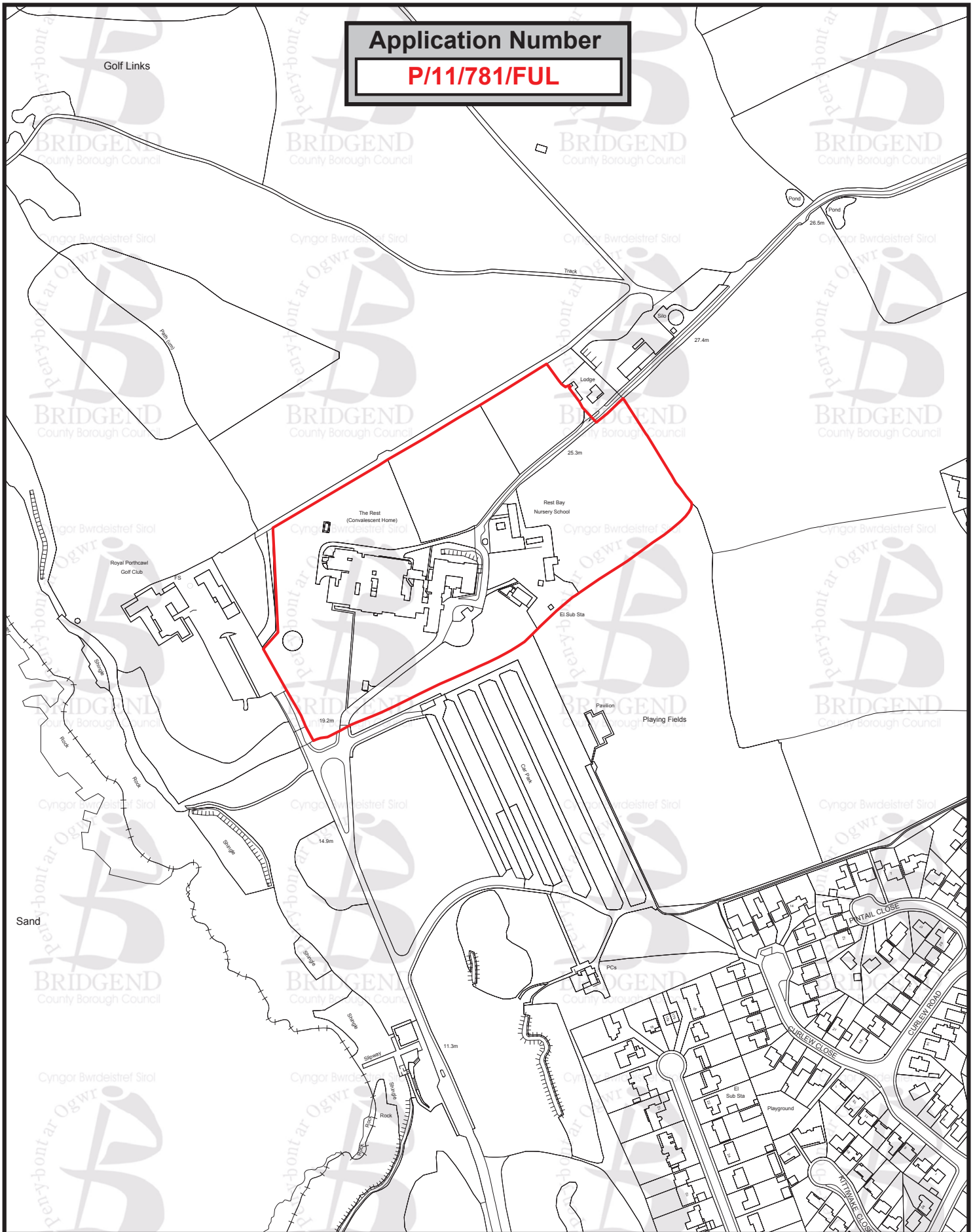


Application Number

P/11/781/FUL



Scale 1:2,500

**Date Issued:
22/05/2013**

**Development-GIS Team
Tel: 01656 643176**

Mark Shephard

Corporate Director-Communities

Communities Directorate,
Bridgend County Borough
Council, Civic Offices,
Angel Street,
Bridgend CF31 4WB.

O:/Drive/Plandraw/MapinfoV9/layout/
DC Committee Location Plan

(c) Crown Copyright and database rights
(2012) Ordnance Survey (100023405)

(c) Hawlfraint a hawliau cronfa ddata'r Goron
(2012) Rhif Trwydded yr Arolwg Ordnans
(100023405)

(c) Cities Revealed Aerial Photography
copyright, The GeoInformation Group (2009)

