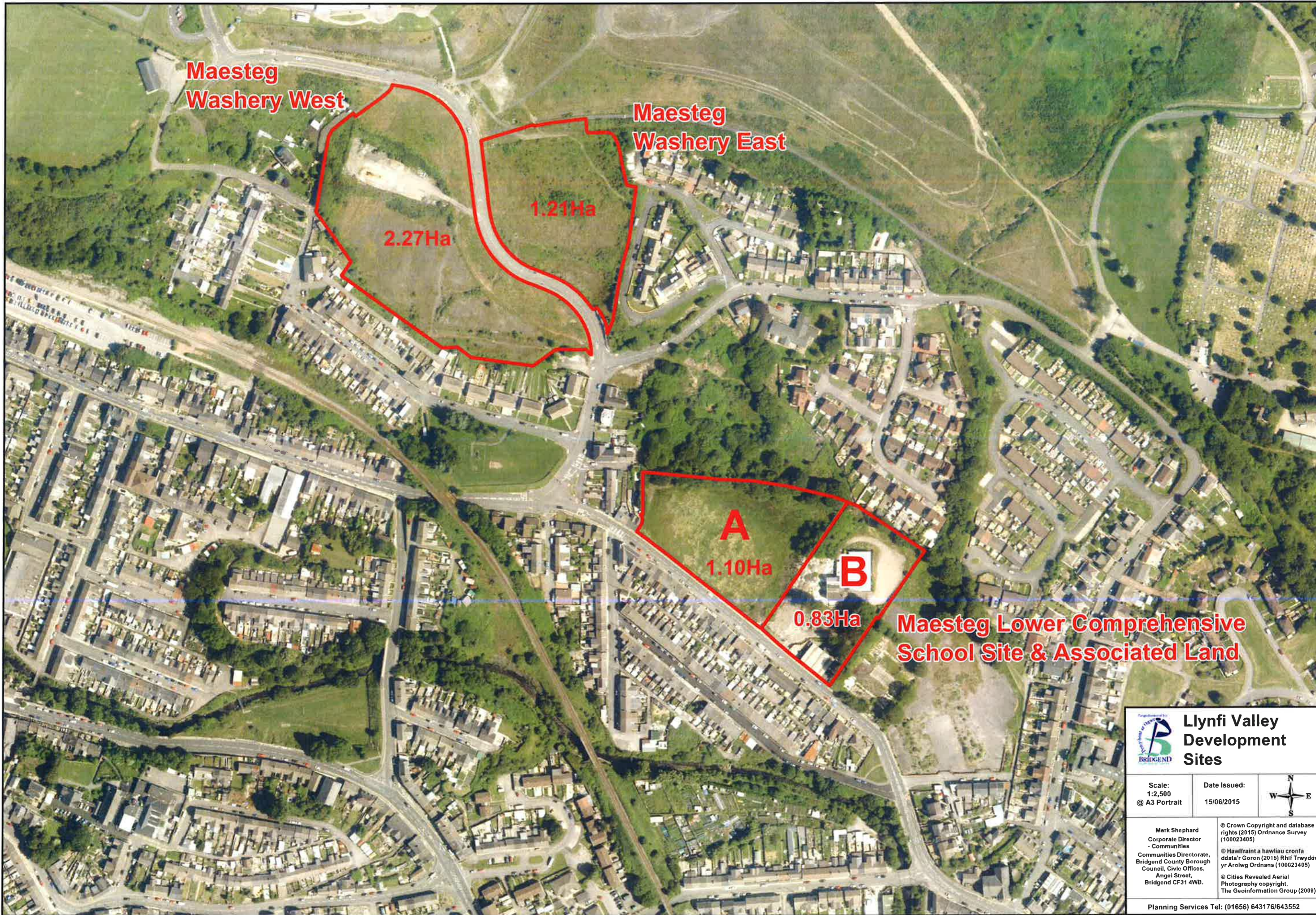


Appendix A





Maesteg Washery West
2.27Ha

Maesteg Washery East
1.21Ha

A
1.10Ha

B
0.83Ha

Maesteg Lower Comprehensive School Site & Associated Land

 Llynfi Valley Development Sites		
Scale: 1:2,500 @ A3 Portrait	Date Issued: 15/06/2015	
Mark Shephard Corporate Director - Communities Communities Directorate, Bridgend County Borough Council, Civic Offices, Angel Street, Bridgend CF31 4WB.		© Crown Copyright and database rights (2015) Ordnance Survey (100023405) © Hawffraint a hawliau cronfa ddata'r Goron (2015) Rhif Trwydded yr Arolwg Ordnans (100023405) © Cities Revealed Aerial Photography copyright, The GeoInformation Group (2009)
Planning Services Tel: (01656) 643176/643552		